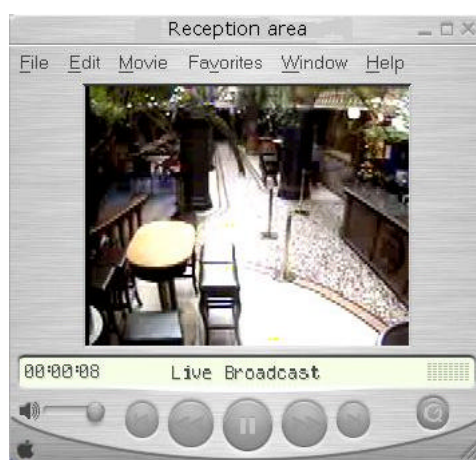




## RMC TECHNICAL SPECIFICATIONS

### Multistream platform for Interactive Surveillance over mobile, low and high speed networks

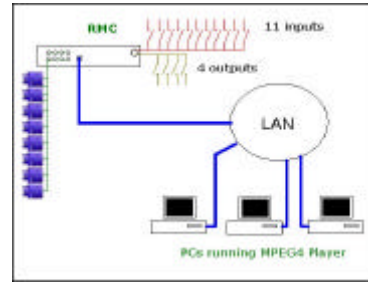
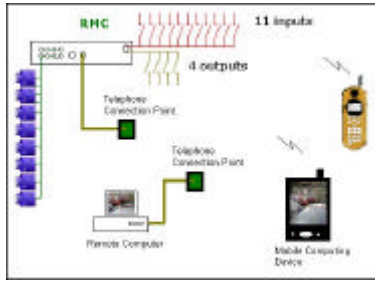
RMC Video Streaming Server is a 'plug and go' device that provides a simple and cost effective method for remote monitoring in real time from a PC or mobile terminal. Recording and playback of remote activity and distribution of high quality video across communication networks to desktop PCs, laptop PCs and mobile terminals. Notification of events through SMS or through email with video attachments eliminates the need for continuous monitoring. Configuration and control of the device from a web browser through the Internet, telephone line or mobile network.



GPRS Live feed average bit rate of 22Kbps and 4fps

#### Features

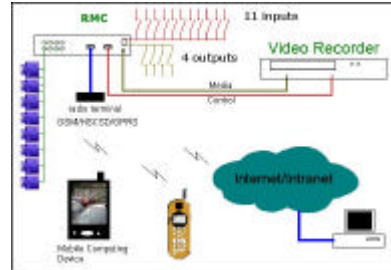
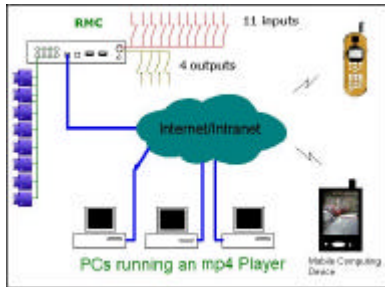
- 8 CCTV inputs supporting PAL/NTSC/SECAM
- 11 digital inputs for event triggering
- 4 digital outputs pre-configured or remotely controlled
- Live and pre-recorded video accessible from PSTN, Internet and Mobile networks
- Live video stream to handheld terminals, Laptop and desktop PCs
- Removable 4MB to 1GB Compact Flash card memory storage
- Low power consumption makes it ideal for remote activity monitoring
- Receive SMS on event triggering
- Receive email with pre-recorded video attachment of triggering event
- Full motion video up to 25fps with streaming bandwidth from 10Kbps to 2Mbps
- Screen resolutions variable from 16X16 to 720X576



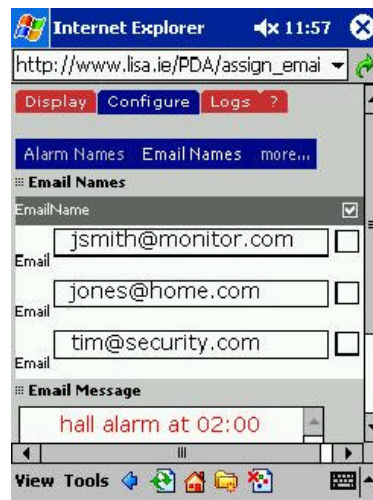
The product has a wide range of applications from point to point over PSTN to high-end applications supporting up to 100 simultaneous users over high-speed networks.

The ability of the device to transmit live video to 2.5G terminals and PDAs opens up new opportunities for remote monitoring of fixed sites.

The ability of the product to send video and telemetry data in a completely wireless environment such as GSM, GPRS, HSCSD and WLAN IEEE802.11 enables real time monitoring of remote wireless sites.



The product is completely configurable through the web interface controlling the bandwidth requirements for video and telemetry transmission, the activation and deactivation of alarm events and the recipients of the SMS and email messages.



## Software Applications

- HTTP server
- FTP server
- Real Time Media Streaming Server
- Adaptive Dynamic Quality of Service Control
- SNMP
- SMTP
- SMS
- DHCP
- Web based configuration

## Video Interface

- 8 CCTV inputs PAL/NTSC/SECAM, 750, 1Vpp
- MPEG-4 encoding Simple Visual Profile @ L1, L2, L3
- Frame Sizes - 176x144, 240x192, 352x288, 640x480, 720x576
- Variable 16x16 to 720x576
- Encoder bit rate from 2Kbps to 2Mbps
- Frame rate from 1fps to 25fps
- Variable Group Of Pictures
- 1 monitor output, 750, 1Vpp

## Communications

### LAN

- 1 port 10/100 Mbps

### WAN

- V.90 modem

### Radio

- GSM/HSCSD/GPRS

### Serial Ports

- 2 RS232C – 110bps to 250Kbps
- Infrared - IRDA 1.0

### Protocols

- HTTP, FTP, ARP, RARP, DHCP, RTSP, RTP/RTCP, UDP, TCP/IP, PPP, CHAP

## Hardware

### Electrical

- Input Volts: 6 to 12 volts DC
- Power consumption: 3 Watts

### Mechanical

- Unit dimensions 300 X 150 X 60 mm
- Video ports connector BNC
- Modem port RJ11 4pin
- LAN RJ45
- Serial 9 way D Type
- Compact flash Type 2

### Memory

- 32 MB Internal RAM
- Compact Flash card 4MB to 1GB

## Alarm Monitoring

### Digital Inputs

- 11 external configurable through web browser
- 1 internal tamper

### Digital Outputs

- 4 configurable through web browser

### Camera Control

- Pan/Tilt/Zoom through RS232/RS422 ports

### Standby Battery

- 12 hours active
- 72 hours standby

## File Format

- MP4 file format for storage and playback